

VIRAL PATHOGENS: US VS. THEM



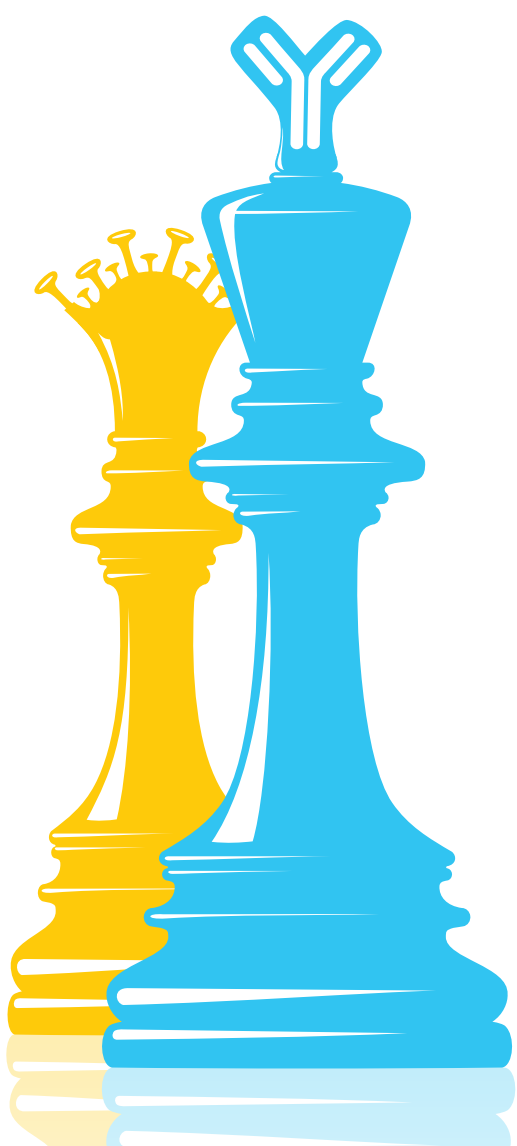
20

S A L T I E L
L I F E S C I E N C E S
S Y M P O S I U M

FRIDAY, MAY 13, 2022

KAHN AUDITORIUM, BSRB

FREE AND OPEN TO THE PUBLIC



TWENTIETH ANNUAL LSI SYMPOSIUM

8:45 A.M.

Welcome

Roger D. Cone, Ph.D.

Vice Provost and Director, U-M Biosciences Initiative; Mary Sue Coleman Director, Life Sciences Institute; Professor of Molecular and Integrative Physiology, Medical School; Professor of Molecular, Cellular, and Developmental Biology, College of Literature, Science, and the Arts

8:50 A.M.

Introduction of the Mary Sue and Kenneth Coleman Life Sciences Lecturer

Mary Sue Coleman, Ph.D.

President of the University of Michigan

9:00 A.M.

Mary Sue and Kenneth Coleman Life Sciences Lecture: Structural correlates of antibody neutralization of viruses

Pamela Bjorkman, Ph.D.

David Baltimore Professor of Biology and Biological Engineering, Merkin Institute Professor, California Institute of Technology

9:50 A.M.

Morning break

10:10 A.M.

Next generation nucleic acid vaccines

Deborah Fuller, Ph.D.

Professor of Microbiology; Associate Director of Research, Washington National Primate Research Center, University of Washington

11:00 A.M.

Molecular mechanism for self vs. non-self RNA discrimination

Sun Hur, Ph.D.

Senior Investigator, Program in Cellular & Molecular Medicine; Oscar M. Schloss, MD Professor of Pediatrics, Professor of Biological Chemistry and Molecular Pharmacology, Harvard Medical School and Boston Children's Hospital; Investigator, Howard Hughes Medical Institute

11:50 A.M.

Poster session & lunch

1:20 P.M.

Noncoding RNA and triphosphate balance in virus infection

Chris Sullivan, Ph.D.

Professor of Molecular Biosciences, University of Texas at Austin

2:10 P.M.

Influenza in vulnerable populations

Stacey Schultz-Cherry, Ph.D.

Full Member, Department of Infectious Diseases; Deputy Director, World Health Organization Collaborating Center for Studies on the Ecology of Influenza in Animals and Birds; Associate Dean of Student Affairs, St. Jude Graduate School of Biomedical Sciences, St. Jude Children's Research Hospital

3:00 P.M.

Afternoon break

3:20 P.M.

Rules of engagement between primate and viral genomes

Harmit Malik, Ph.D.

Professor and Associate Director, Basic Sciences Division, Fred Hutchinson Cancer Research Center; Investigator, Howard Hughes Medical Institute

4:10 P.M.

Closing remarks

Roger D. Cone



LIFE SCIENCES INSTITUTE
UNIVERSITY OF MICHIGAN

lsi.umich.edu