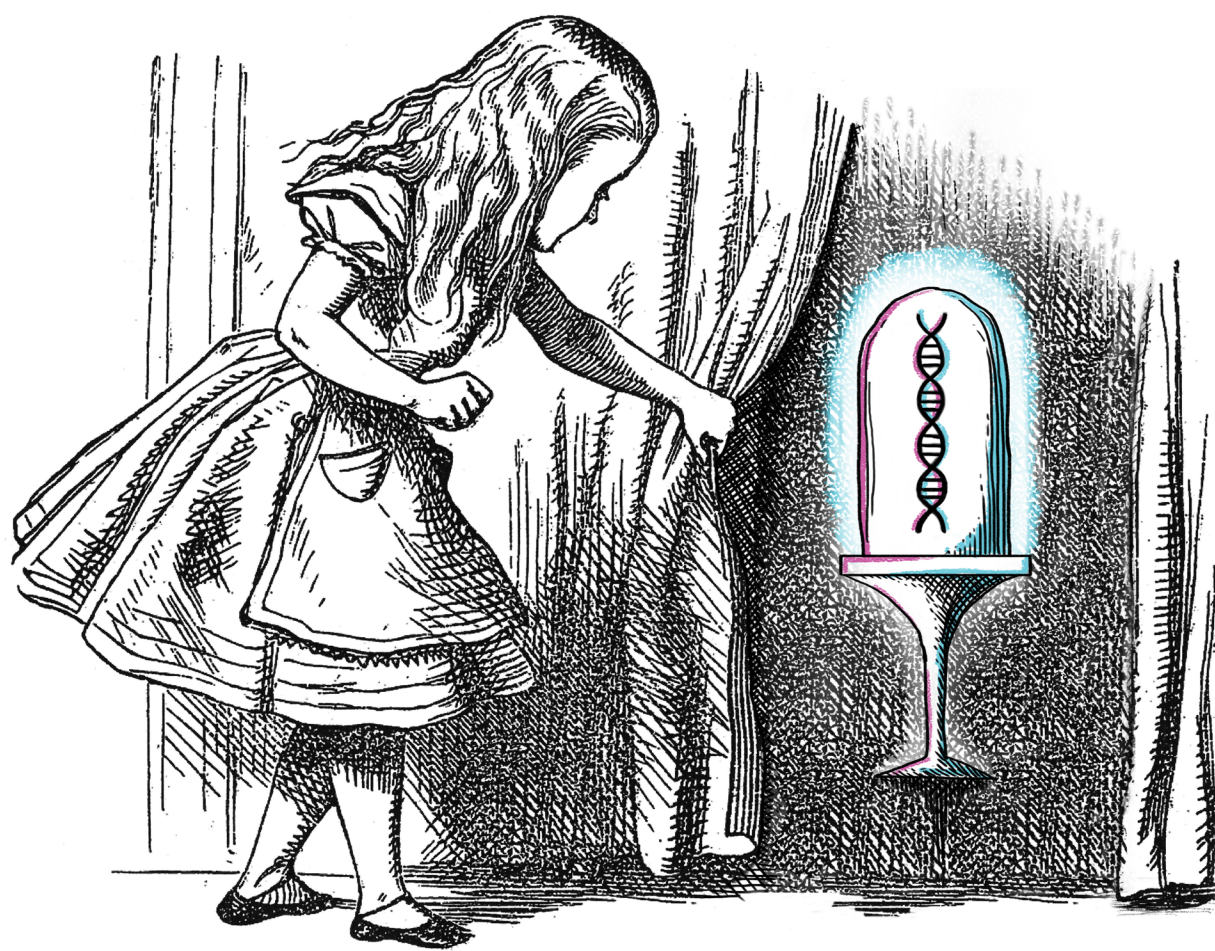


GAME CHANGERS

TECHNOLOGIES THAT ARE REWRITING THE FUTURE OF THE LIFE SCIENCES



SIXTEENTH ANNUAL LSI SYMPOSIUM

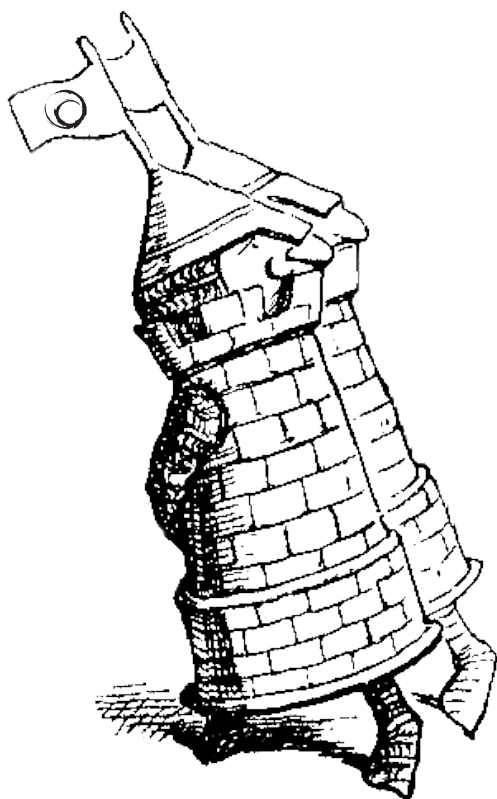
16

SALTIEL LIFE SCIENCES SYMPOSIUM

SEPTEMBER 15, 2017

FORUM HALL, PALMER COMMONS
100 WASHTENAW AVE, ANN ARBOR

FREE AND OPEN TO THE PUBLIC



8:30 A.M.

Welcome | **Mark Schlissel, M.D., Ph.D.**
President of the University of Michigan

8:40 A.M.

200 Years of Life Sciences at U-M | **Roger D. Cone, Ph.D.**
Mary Sue Coleman Director, Life Sciences Institute; Professor of Molecular and Integrative Physiology, Medical School; Professor of Molecular, Cellular, and Developmental Biology, College of Literature, Science, and the Arts; Vice Provost and Director, U-M Biosciences Initiative
& **David Ginsburg, M.D.**
Research Professor, Life Sciences Institute; James V. Neel Distinguished University Professor of Internal Medicine, Human Genetics and Pediatrics, Warner-Lambert/Parke-Davis Professor of Medicine, Medical School; Howard Hughes Medical Institute Investigator

9:10 A.M.

Introduction of the Mary Sue and Kenneth Coleman
Life Sciences Lecturer | **Alan R. Saltiel, Ph.D.**
Professor and Director, Comprehensive Diabetes Center, University of California, San Diego School of Medicine; Director, Life Sciences Institute (2002–2015)

9:15 A.M.

Mary Sue and Kenneth Coleman Life Sciences Lecture:
Nature's Gift: How the Discovery of Structural Principles in a Microbial Protein Helped Illuminate the Pathophysiology of Psychiatry |
Karl Deisseroth, M.D., Ph.D.
D.H. Chen Professor of Bioengineering and of Psychiatry and Behavioral Sciences, Stanford University; Howard Hughes Medical Institute Investigator

10:30 A.M.

Single Molecules and Single Cells: Probing Chemistry and Biology at Their Fundamental Limit | **David R. Walt, Ph.D.**
Core Faculty Member, Wyss Institute at Harvard University; Professor of Pathology, Harvard Medical School; Howard Hughes Medical Institute Professor; Founder of Illumina, Inc. and Quanterix, Corp.

11:30 A.M.

Whole-Animal Imaging with High Spatio-Temporal Resolution |
Philipp Keller, Ph.D.
Group Leader, Howard Hughes Medical Institute's Janelia Research Campus

1:45 P.M.

Probing the Molecular Organization of Cells and Organelles Using Cryo-Electron Microscopy | **Daniela Nicastro, Ph.D.**
Associate Professor of Cell Biology and Biophysics, Cryo-EM Facility Director, University of Texas Southwestern Medical Center

2:45 P.M.

Poster Session in Great Lakes Rooms

4:00 P.M.

Engineering Sub-nm, Organs & Ecosystem | **George Church, Ph.D.**
Core Faculty Member, Wyss Institute at Harvard University; Professor of Genetics, Harvard Medical School; Professor of Health Sciences and Technology, Harvard University and Massachusetts Institute of Technology

4:55 P.M.

Closing Remarks | **Roger D. Cone**



LIFE SCIENCES INSTITUTE
UNIVERSITY OF MICHIGAN

lsi.umich.edu